

November

STD: VII

NOVEMBER

## CH: 8 Reproduction in Plants

### I Technical terms:

1. Pollination:

Transfer of pollen grains from the anther of the stamen to the stigma of the pistil.

2. Fertilisation:

Union of an egg and a male gamete forming a zygote.

3. Zygote:

The cell formed by the union of an egg with a male gamete.

### II Answer the following:

1. What is vegetative propagation?

Ans i) Reproduction from vegetative parts such as modified roots, underground stems or leaves, without the help of any reproductive organ is called vegetative propagation.

ii) It may be natural or artificial.

iii) Plants like sugarcane, rose, banana etc, reproduce by vegetative Propagation.



2. What is meant by cross-pollination? Name two agents of pollination.

Ans i) Pollination which takes place between two flowers present on two different plants of the same species is called cross pollination.

ii) The most common agents of pollination are wind, water and insects.

### III Long Answer question:

1. How does budding differ from binary fission?

Ans i) In binary fission, first the nucleus divides into two nuclei.

ii) The cytoplasm then divides into two parts each containing a nucleus.

iii) Further stretching leads to the formation of the two daughter cells.

iv) These cells so formed grow into mature cells and then undergo similar binary fission.

v) Yeast (a non-green plant) reproduce by budding.

vi) A bulb like projection formed on the body of an organism is known as the bud.

vii) The nucleus of the parent body divides into two and one of the nuclei goes into the bud.



PAGE No.  
DATE / /

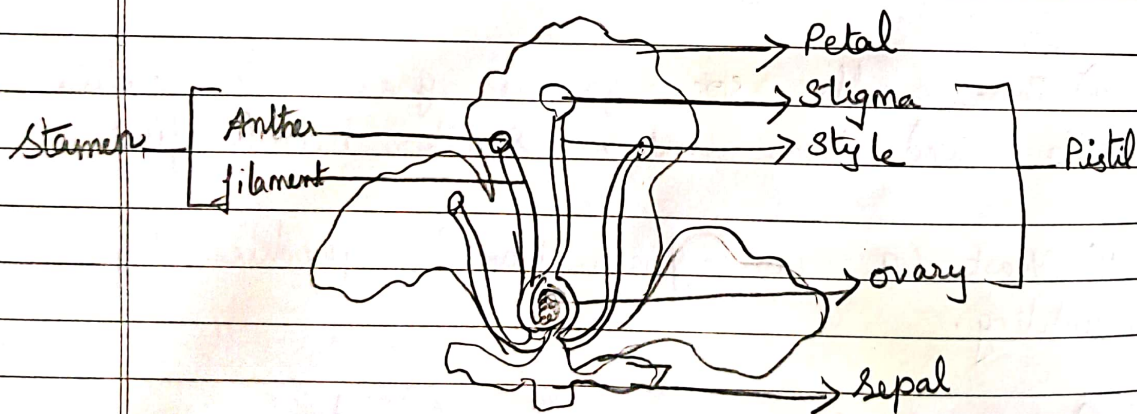
viii) When the bud gets matured, it detaches itself from the parent body and becomes an independent individual.

#### IV HOTS

1. How would you know whether a flower is adapted for self pollination or cross pollination?

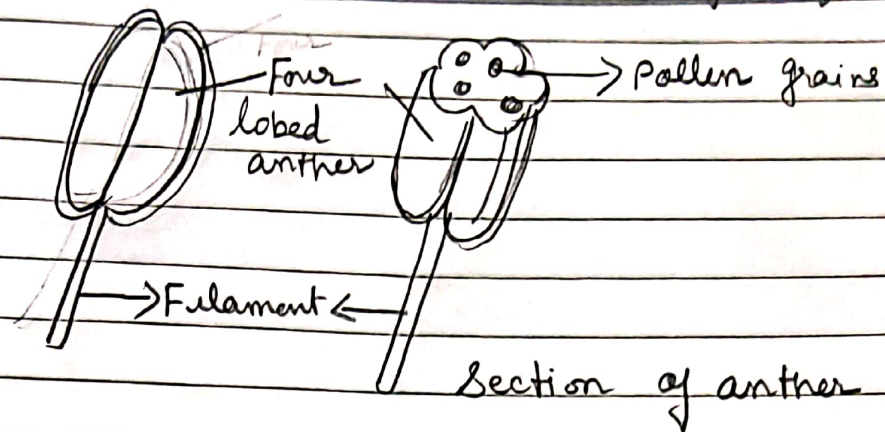
Ans If flowers of a plant are very close to each other, it means they are adapted for self pollination and if the flowers of the plant are far from each other then they are adapted for cross-pollination.

V Draw a labelled diagram of the vertical section of a flower and the reproductive parts of a flower.

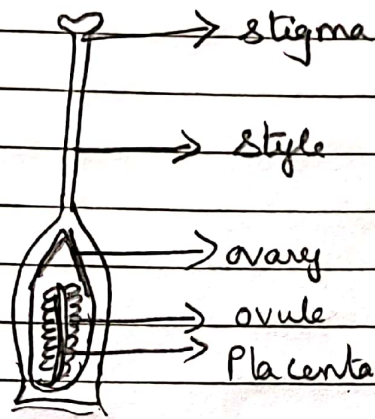


The vertical section of a flower

## The reproductive parts (organs) of a flower



Stamen - Male reproductive organ



Pistil - Female reproductive organ

Anne  
4/11/25